

Cited Antibodies -2023

Your Expertise

Our Antibodies

Accelerated Discovery



Highlighted SARS-CoV-2 Publications

SARS-CoV / SARS-CoV-2 (COVID-19) Spike antibody [1A9] (GTX632604)

Lancet. 2020 Aug 1;396(10247):320-322
Nat Med. 2021 May;27(5):892-903.
Nature. 2022 Mar;603(7902):700-705.
Nat Biotechnol. 2023 Jan;41(1):128-139.
Cell. 2023 Jan 5;186(1):112-130.e20.
Lancet Neurol. 2020 Nov;19(11):919-929.

SARS-CoV-2 (COVID-19) Nucleocapsid antibody (GTX135357)

N Engl J Med. 2020 Oct 15;383(16):1544-1555.
Nature. 2022 Jul;607(7918):351-355.
Cell. 2023 Feb 2;186(3):621-645.e33.
Cell. 2021 Aug 5;184(16):4203-4219.e32
Science. 2021 Sep 17;373(6561):eabj0299.
Immunity. 2022 Jun 14;55(6):998-1012.e8.

SARS-CoV-2 (COVID-19) Nucleocapsid antibody [HL344] (GTX635679)

Nature. 2022 Mar;603(7902):700-705.
Nature. 2022 Mar;603(7902):706-714.
Nature. 2022 May;605(7909):340-348.

SARS-CoV-2 (COVID-19) Nucleocapsid antibody (GTX135361)

Cell. 2023 Jan 5;186(1):112-130.e20.
Cell. 2021 Dec 9;184(25):6037-6051.e14.

SARS-CoV-2 (COVID-19) Nucleocapsid antibody (GTX135570)

Nature. 2022 Feb;602(7896):300-306.
Nature. 2022 Mar;603(7902):700-705.

SARS-CoV / SARS-CoV-2 (COVID-19) NSP8 antibody [5A10] (GTX632696)

Nat Biotechnol. 2022 Jul;40(7):1132-1142.

Featured Recent Publications

Signal Transduct Target Ther. 2023 Jan 25;8(1):30.
 Iba1 antibody (GTX101495)

Cell Res. 2022 Dec;32(12):1086-1104.
 PI4 kinase alpha antibody [C1C2], Internal (GTX107441)
 FIP200 antibody (GTX129093)
 WIPI2 antibody (GTX132453)

Nat Neurosci. 2022 Oct;25(10):1379-1393.
 Iba1 antibody (GTX100042)

Cell Stem Cell. 2022 Oct 6;29(10):1475-1490.e6.
 Dengue virus NS3 protein antibody (GTX124252)

Nat Cancer. 2022 Oct;3(10):1211-1227.
 Rad51 antibody [N1C2] (GTX100489)

Nature. 2022 Aug;608(7922):421-428.
 COX4 antibody (GTX114330)

Nat Genet. 2022 Aug;54(8):1202-1213.
Nat Cell Biol. 2022 Mar;24(3):364-372.
 TET1 antibody [N3C1] (GTX124207)

Cell. 2022 Aug 18;185(17):3169-3185.e20.
 TET3 antibody [C3], C-term (GTX121453)

Nat Neurosci. 2022 Jun;25(6):688-701.
 ATP6V1A antibody (GTX110815)

Nature. 2022 Apr;604(7905):354-361.
 Sox10 antibody (GTX128374)

Nature. 2022 Apr;604(7904):111-119.
 p63 antibody [N2C1], Internal (GTX102425)

Cell Metab. 2022 Apr 5;34(4):533-548.e12.
 Pyruvate Dehydrogenase E1 alpha antibody (GTX104015)
 MDH2 antibody (GTX105870)

Cell Mol Immunol. 2022 Feb;19(2):210-221.
 ACE2 antibody [N1N2], N-term (GTX101395)

Cell. 2022 Feb 17;185(4):712-728.e14.
 GAPDH antibody [GT239] (GTX627408)

Science. 2022 Feb 18;375(6582):eabc4203.
 GAPDH antibody (GTX100118)

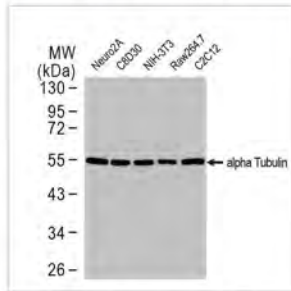
Nature. 2022 Jan;601(7893):428-433.
 NDUFS3 antibody (GTX105835)

Mol Cancer. 2022 Jan 15;21(1):17.
 SART3 antibody [C3], C-term (GTX107684)

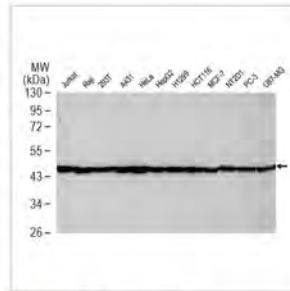
Blood. 2022 Jan 6;139(1):104-117.
 ENTPD6 antibody [N1C1] (GTX101851)
 Fibrinogen gamma antibody (GTX108640)
 GAPDH antibody [GT239] (GTX627408)

Top Cited Products

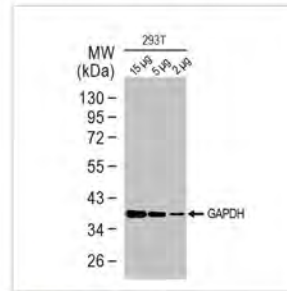
Internal Controls



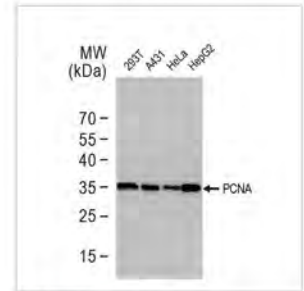
alpha Tubulin antibody
(GTX628802)



beta Actin antibody
(GTX109639)



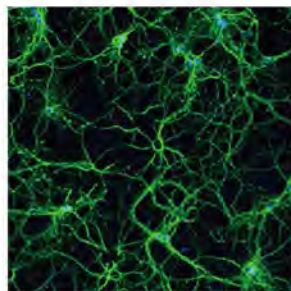
GAPDH antibody
(GTX100118)



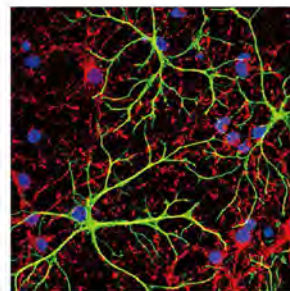
PCNA antibody
(GTX100539)



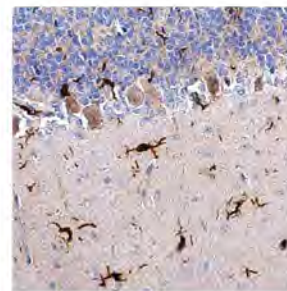
Neuroscience



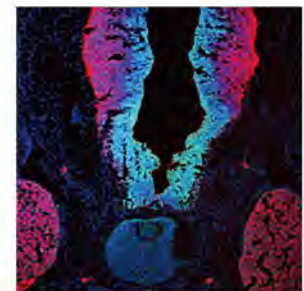
beta Tubulin 3/ TUJ1
antibody [GT11710]
(GTX628802)



GFAP antibody
(GTX108711)



Iba1 antibody
(GTX100042)



SOX2 antibody [N1C3]
(GTX101507)

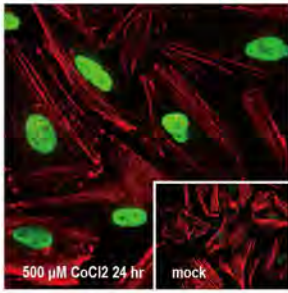


Cat. No.	Product Name	Host & Clonality	Reactivity	Applications
GTX101395	ACE2 antibody [N1N2], N-term	Rb pAb	Hu,Ms,Rat,AGMK	WB, ICC/IF, IHC-P, FACS, ELISA
GTX121937	AKT antibody [N3C2], Internal	Rb pAb	Hu,Ms,Rat,Pig,Japanese Medaka	WB, ICC/IF, IHC-P, IHC-Fr, IP
GTX128414	AKT (phospho Ser473) antibody	Rb pAb	Hu,Ms,Rat,Pig	WB, ICC/IF, IHC-P, IP
GTX100034	alpha Smooth Muscle Actin antibody	Rb pAb	Hu,Ms,Rat,Zfish	WB, ICC/IF, IHC-P, IHC-Fr
GTX628802	alpha Tubulin antibody [GT114]	Ms mAb	Hu, Ms, Rat, Zfish, Dm, Crudian carp	WB, ICC/IF, IHC-P, IHC-Fr, FACS
GTX112141	alpha Tubulin antibody	Rb pAb	Hu,Ms,Rat,Dm,Chk,C. elegans,Mosq,Tetrahymena	WB, ICC/IF, IHC-P, IHC-Fr
GTX109242	Arginase 1 antibody	Rb pAb	Hu,Ms,Rat	WB, ICC/IF, IHC-P, IHC-Fr, FACS, IP, ELISA, Sandwich ELISA
GTX70103	ATM antibody [2C1]	Ms mAb	Hu,Ms,Rat,Mk	WB, ICC/IF, IHC-P, FACS, IP, ELISA, ChIP assay, IHC
GTX128145	ATR (phospho Thr1989) antibody	Rb pAb	Hu,Ms	WB, ICC/IF, IHC-P, IP
GTX109683	Bax antibody [N1N2], N-term	Rb pAb	Hu,Ms,Rat	WB, ICC/IF, IHC-P, IHC-Fr, IP
GTX100064	Bcl-2 antibody [N1N2], N-term	Rb pAb	Hu,Ms,Rat,Zfish,Cat,Dog	WB, ICC/IF, IHC-P
GTX109639	beta Actin antibody	Rb pAb	Hu,Ms,Rat,Yeast,Sheep,Dm,Cat,..... 1	WB, ICC/IF, IHC-P, IHC-Fr, IP
GTX629630	beta Actin antibody [GT5512]	Ms mAb	Hu,Ms,Rat,Zfish,Yeast,Rb,Goat,Dm,Cat,Dog,Mk,Xenopus	WB, ICC/IF, IHC-P, IP
GTX101435	beta Catenin antibody [N1N2-2], N-term	Rb pAb	Hu,Ms,Rat,Zfish,Rb,Cat,Dog	WB, ICC/IF, IHC-P, IHC-Wm, FACS, IP, ChIP assay, IHC
GTX631836	beta Tubulin 3/ Tuj1 antibody [GT11710]	Ms mAb	Hu,Ms,Rat,Fish	WB, ICC/IF, IHC-P, IHC-Fr, IP
GTX101279	beta Tubulin antibody	Rb pAb	Hu,Ms,Rat,Zfish,Hm	WB, ICC/IF, IHC-P, IHC-Wm
GTX110543	Caspase 3 antibody	Rb pAb	Hu,Ms,Rat	WB, ICC/IF, IHC-P, IHC-Fr, IP
GTX110704	Catalase antibody	Rb pAb	Hu,Ms,Rat	WB, IHC-P, IHC-Fr
GTX103042	Cyclin A2 antibody	Rb pAb	Hu,Ms,Rat	WB, ICC/IF, IHC-P, IP
GTX108585	Cytochrome C antibody	Rb pAb	Hu,Ms,Rat,Dm,Dog	WB, ICC/IF, IHC-P, IHC-Fr
GTX100443	E-Cadherin antibody	Rb pAb	Hu,Ms,Rat,Zfish,Dog	WB, ICC/IF, IHC-P, IHC-Wm, IP
GTX112794	Fibronectin antibody [N1N2], N-term	Rb pAb	Hu,Ms,Rat	WB, ICC/IF, IHC-P, IHC-Fr, IP, ELISA
GTX111010	FIS1 antibody	Rb pAb	Hu,Ms,Rat	WB, ICC/IF, IHC-P
GTX100118	GAPDH antibody	Rb pAb	Hu,Ms,Rat,Zfish,Yeast,Rb,Dm,Bov,..... 2	WB, ICC/IF, IHC-P, IP
GTX627408	GAPDH antibody [GT239]	Ms mAb	Hu,Ms,Rat,Zfish,Yeast,Dm,Dog,Pig,Mk,C. albicans,E. coli	WB, ICC/IF, IHC-P, EMSA
GTX108711	GFAP antibody	Rb pAb	Hu,Ms,Rat	WB, ICC/IF, IHC-P, IHC-Fr, IHC
GTX113617	GFP antibody	Rb pAb	Hu,Ms,Rat	WB, ICC/IF, IHC-P, IHC-Fr, IHC-Wm, IP, Dot, ELISA, IHC
GTX113340	Grp78 antibody	Rb pAb	Hu,Ms,Rat,Chk	WB, ICC/IF, IHC-P
GTX115044	HA tag antibody	Rb pAb		WB, ICC/IF, IP, ELISA
GTX100513	HDAC1 antibody	Rb pAb	Hu,Ms,Rat,Zfish	WB, ICC/IF, IHC-P, IHC-Fr, IHC-Wm, IP, ChIP assay
GTX70268	Hec1 antibody [9G3.23]	Ms mAb	Hu,Ms,Hm,Kg	WB, ICC/IF, IHC-Fr, FACS, IP, PLA
GTX101147	Heme Oxygenase 1 antibody	Rb pAb	Hu,Ms,Rat,Mk	WB, ICC/IF, IHC-P, ELISA, Sandwich ELISA
GTX127309	HIF1 alpha antibody	Rb pAb	Hu,Ms,Rat,Rb,Bov	WB, ICC/IF, IHC-P, IHC-Fr, IP, ChIP assay
GTX127340	Histone H2A.XS139ph (phospho Ser139) antibody	Rb pAb	Hu,Ms,Rat,Zfish	WB, ICC/IF, IHC-P, IHC-Fr, IHC-Wm
GTX122148	Histone H3 antibody	Rb pAb	Hu,Ms,Rat,Dm,Pig,Mk,Fungi,Golden Syrian Hamster,Rice	WB, ICC/IF, IHC-P, IP, ChIP assay, IHC

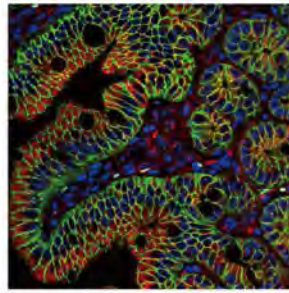
1 Hu,Ms,Rat,Yeast,Sheep,Dm,Cat,Dog,Hm,Chk,Pig,Mk,C. elegans,C. albicans,E. coli,Hrs,Rice,Xenopus,Treeshrew,Plant,Worm

2 Hu,Ms,Rat,Zfish,Yeast,Rb,Dm,Bov,Dog,Hm,Chk,Pig,Mk,C. elegans,E. coli,Mosq,Nematode,Pika,Plant,Fish,Bacteria,Insect,milkfish

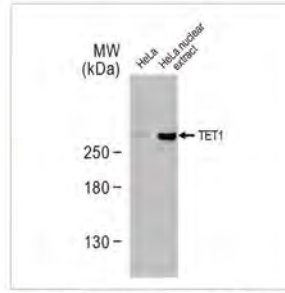
Cancer



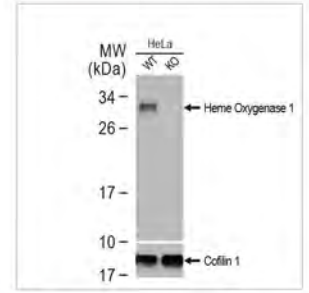
HIF1 alpha antibody (GTX127309)



beta Catenin antibody [N1N2-2] (GTX101435)



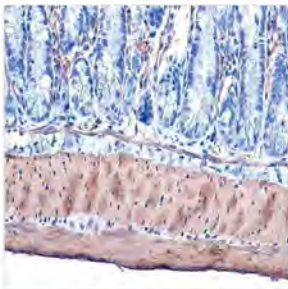
TET1 antibody [N3C1] (GTX124207)



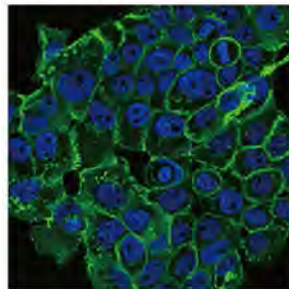
Heme Oxygenase 1 antibody (GTX101147)



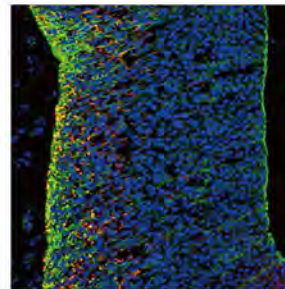
Epithelial-to-Mesenchymal Transition (EMT)



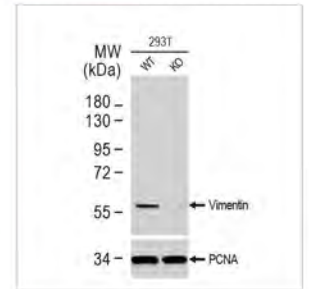
alpha Smooth Muscle Actin antibody (GTX100034)



E-Cadherin antibody (GTX100443)



N-Cadherin antibody (GTX127345)

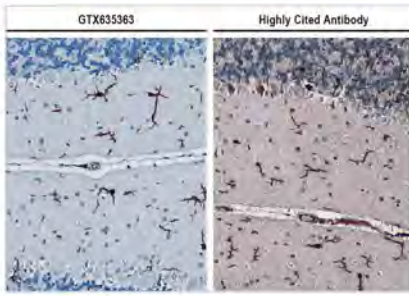


Vimentin antibody (GTX100619)

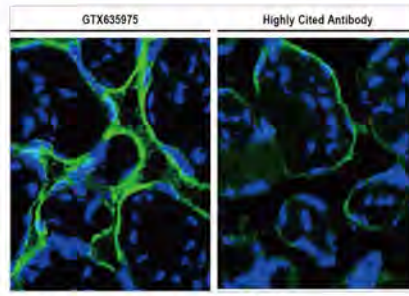


Cat. No.	Product Name	Host & Clonality	Reactivity	Applications
GTX109753	Hsp90 alpha antibody	Rb pAb	Hu,Ms,Rat,Dm,Mk,Nematode	WB, ICC/IF, IHC-P, IP
GTX100042	Iba1 antibody	Rb pAb	Hu,Ms,Rat	WB, ICC/IF, IHC-P, IHC-Fr, FACS, IHC, IHC (Free Floating)
GTX74034	IL1 beta antibody	Rb pAb	Hu,Ms,Rat	WB, ICC/IF, IHC-P, IHC-Fr, ELISA
GTX110527	IL6 antibody	Rb pAb	Hu,Ms,Rat	WB, ICC/IF, IHC-P, IHC-Fr
GTX128839	Integrin beta 1 / CD29 antibody	Rb pAb	Hu,Ms,Rat,Dog	WB, ICC/IF, IHC-P, IHC-Fr, IP
GTX127375	LC3B antibody	Rb pAb	Hu,Ms,Rat,Pig,Mosq	WB, ICC/IF, IHC-P, IHC-Fr, FACS, IP
GTX128508	mCherry antibody	Rb pAb		WB, ICC/IF, IHC-Fr, IHC-Wm, IP, PLA
GTX107538	MLKL antibody	Rb pAb	Hu,Ms	WB, IP
GTX104577	MMP2 antibody	Rb pAb	Hu,Ms,Rat	WB, ICC/IF, IHC-P, IHC-Fr, IP
GTX100458	MMP9 antibody [N2C1], Internal	Rb pAb	Hu,Ms,Rat,Bov	WB, ICC/IF, IHC-P, IHC-Fr, IHC-Wm, IHC
GTX70212	Mre11 antibody [12D7]	Ms mAb	Hu,Rat	WB, ICC/IF, IHC-P, IP, ELISA, Functional Assay, PLA
GTX100664	MUC2 antibody [C3], C-term	Rb pAb	Hu,Ms	WB, ICC/IF, IHC-P, IHC-Fr, IHC
GTX100863	Nanog antibody [N3C3]	Rb pAb	Hu,Ms,Ceratotherium simum	WB, ICC/IF, IHC-P, IHC-Fr, IP, ELISA, IHC, Sandwich ELISA
GTX70224	NBS1 antibody [1D7]	Ms mAb	Hu,Ms,Rat	WB, ICC/IF, IP
GTX127345	N-Cadherin antibody	Rb pAb	Hu,Ms,Rat,Mk	WB, ICC/IF, IHC-P, IHC-Fr
GTX102090	NFKB p65 antibody	Rb pAb	Hu,Ms,Rat	WB, ICC/IF, IHC-P, IHC-Fr, IP, ChIP assay
GTX103322	NRF2 antibody [N2C2], Internal	Rb pAb	Hu,Ms,Rat,Zfish,Allg,Plant,Bird	WB, ICC/IF, IHC-P, IP, ChIP assay
GTX70220	Nuclear Matrix Protein p84 antibody [5E10]	Ms mAb	Hu,Ms,Rat,Hm,Mk	WB, ICC/IF, IHC-P, IP, ChIP assay, IHC
GTX101497	Oct4 antibody	Rb pAb	Hu,Ms,Rat	WB, ICC/IF, IHC-P, IHC-Fr, FACS, IP
GTX110720	p38 MAPK antibody [N1C3-2]	Rb pAb	Hu,Ms,Rat,Dog	WB, ICC/IF, IHC-P
GTX102425	p63 antibody [N2C1], Internal	Rb pAb	Hu,Ms,Rat,Dog	WB, ICC/IF, IHC-P, IHC-Fr, IP, PLA
GTX100573	PARP antibody	Rb pAb	Hu,Ms,Rat	WB, ICC/IF, IHC-P, IP, ChIP assay
GTX100539	PCNA antibody	Rb pAb	Hu,Ms,Rat,Golden Syrian Hamster	WB, ICC/IF, IHC-P, IHC-Fr, IP, FISH, IHC
GTX104763	PD-L1 antibody	Rb pAb	Hu	WB, ICC/IF, IHC-P, IHC-Fr, FACS
GTX70228	Rad50 antibody [13B3]	Ms mAb	Hu,Ms,Rat,Mk	WB, ICC/IF, IHC-P, IP, IHC, in vitro
GTX70230	Rad51 antibody [14B4]	Ms mAb	Hu,Ms,Rat,Chk	WB, ICC/IF, IHC-P, IP, IHC, PLA
GTX118619	RBPM5 antibody	Rb pAb	Hu,Ms,Rat,Mk	WB, ICC/IF, IHC-P, IHC-Fr, IHC-Wm, IHC
GTX100554	SOD1 antibody	Rb pAb	Hu,Ms,Rat,Allg,Bird	WB, IHC-P, ELISA, Sandwich ELISA
GTX116093	SOD2 antibody	Rb pAb	Hu,Ms,Rat,Allg,Bird	WB, ICC/IF, IHC-P, IHC-Fr
GTX101507	SOX2 antibody [N1C3]	Rb pAb	Hu,Ms,Rat,Frg,Ceratotherium simum	WB, ICC/IF, IHC-P, IHC-Fr, FACS, IP
GTX100685	SQSTM1 / P62 antibody [N3C1], Internal	Rb pAb	Hu,Ms,Rat,Zfish,Bov,Honeybee,Mosq	WB, ICC/IF, IHC-P, FACS, IP, PLA
GTX124207	TET1 antibody [N3C1]	Rb pAb	Hu,Ms,Mk	WB, ICC/IF, IHC-P, IHC-Wm, IP, ChIP assay, IHC
GTX110520	TNF alpha antibody	Rb pAb	Hu,Ms,Rat,Bov	WB, ICC/IF, IHC-P, IHC-Fr
GTX70255	TSG101 antibody [4A10]	Ms mAb	Hu,Ms,Rat,Zfish,Dog,Hm,Pig,Mk	WB, ICC/IF, IHC-P, FACS, IP, ELISA, EM, IHC, IHC (Free Floating)
GTX127310	Twist1/2 antibody	Rb pAb	Hu,Ms,Rat,Dm	WB, IHC-P, IHC
GTX102643	VEGF antibody	Rb pAb	Hu,Ms,Rat	WB, IHC-P, ELISA, IHC
GTX100619	Vimentin antibody	Rb pAb	Hu,Ms,Rat,Cat,Dog	WB, ICC/IF, IHC-P, IHC-Fr, IP, ELISA, IHC, Sandwich ELISA

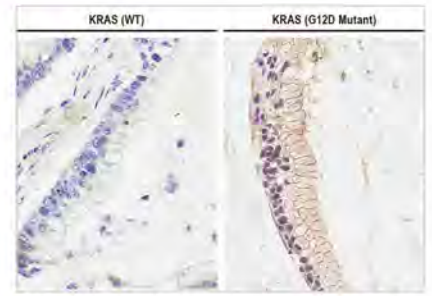
Highlighted Recombinant Rabbit Monoclonal Antibodies



Iba1 antibody [HL22]
(GTX635363)



PD-L1 antibody [HL1041]
(GTX635975)



RAS (G12D Mutant) antibody [HL10]
(GTX635362)

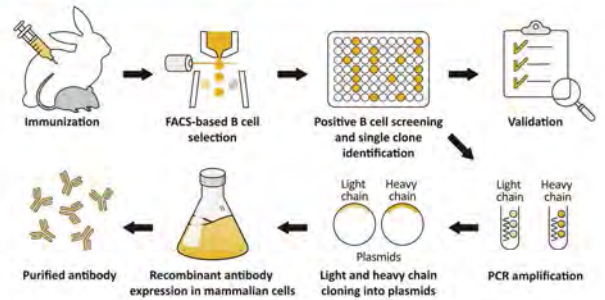
Cat. No.	Product Name	Host & Clonality	Reactivity	Applications
GTX635479	53BP1 antibody [HL275]	Rec Rb mAb	Hu,Ms,Rat,Cat,Dog	WB, ICC/IF, IHC-P
GTX636265	ACE2 antibody [HL1092]	Rec Rb mAb	Hu,Cat,Dog,AGMK	WB, ICC/IF, IHC-P
GTX637885	AHR antibody [HL1984]	Rec Rb mAb	Hu,Ms	WB, ICC/IF
GTX636413	AKT1 antibody [HL1142]	Rec Rb mAb	Hu,Rat,Cat,Dog	WB, ICC/IF, IHC-P
GTX638119	Annexin A1 antibody [HL2141]	Rec Rb mAb	Hu,Ms,Rat	WB, IHC-P
GTX635842	Androgen Receptor (ARv7 Splice Variant) antibody [HL1028]	Rec Rb mAb	Hu,Ms	WB, ICC/IF, IHC-P
GTX635395	ATM antibody [2C1-RB]	Rec Rb mAb	Hu,Ms,Rat	WB, IHC-P
GTX635715	Bax antibody [HL236]	Rec Rb mAb	Hu,Ms,Rat	WB, IHC-P
GTX637085	B-Raf antibody [HL1606]	Rec Rb mAb	Hu,Ms,Rat,Cat,Dog	WB, ICC/IF, IHC-P
GTX636810	Caspase 3 antibody [HL1370]	Rec Rb mAb	Hu,Rat	WB, IHC-P
GTX637231	CD44 antibody [HL1650]	Rec Rb mAb	Hu,Cat,Dog	WB, ICC/IF, IHC-P
GTX636873	CDK4 antibody [HL1407]	Rec Rb mAb	Hu,Ms,Rat	WB, IHC-P
GTX635979	ciAP1 antibody [HL1045]	Rec Rb mAb	Hu,Ms,Rat,Cat,Dog	WB, IHC-P
GTX636283	CLOCK antibody [HL1099]	Rec Rb mAb	Hu,Ms,Rat	WB, ICC/IF, IHC-P
GTX636759	EpCAM antibody [HL1339]	Rec Rb mAb	Hu,Ms,Rat	WB, ICC/IF, IHC-P, FACS
GTX635617	ERK1 (phospho Thr202/Tyr204) + ERK2 (phospho Thr185/Tyr187) antibody [HL173]	Rec Rb mAb	Hu,Ms,Rat	WB, ICC/IF, IHC-P
GTX637865	FAH antibody [HL1972]	Rec Rb mAb	Hu,Ms,Rat	WB, IHC-P
GTX637921	Galectin 3 antibody [HL2020]	Rec Rb mAb	Hu,Ms	WB, ICC/IF, IHC-P
GTX635619	Gli1 antibody [HL247]	Rec Rb mAb	Hu,Ms,Rat	WB, IHC-P
GTX636422	Glucocorticoid Receptor antibody [HL1151]	Rec Rb mAb	Hu,Ms,Rat,Cat	WB, ICC/IF, IHC-P
GTX638004	GNAI3 antibody [HL2096]	Rec Rb mAb	Hu,Ms,Rat	WB, IHC-P
GTX635477	GPX2 antibody [HL125]	Rec Rb mAb	Hu,Ms,Rat,Zfsh,Dog	WB, IHC-P
GTX637038	GRK2 antibody [HL1562]	Rec Rb mAb	Hu,Ms,Rat	WB, ICC/IF, IHC-P
GTX635363	Iba1 antibody [HL22]	Rec Rb mAb	Hu,Ms,Rat	WB, ICC/IF, IHC-P, IHC-Fr
GTX636657	Integrin beta 1 / CD29 antibody [HL1255]	Rec Rb mAb	Hu,Ms,Cat,Dog	WB, IHC-P
GTX637918	ISG15 antibody [HL2017]	Rec Rb mAb	Hu,Ms,Rat	WB, ICC/IF
GTX637379	KDM6A antibody [HL1731]	Rec Rb mAb	Hu,Cat,Dog	WB, ICC/IF, IHC-P
GTX636524	MMP2 antibody [HL1207]	Rec Rb mAb	Hu,Ms	WB, IHC-P
GTX636768	NEK7 antibody [HL1348]	Rec Rb mAb	Hu,Ms	WB, ICC/IF, IHC-P
GTX635621	p70 S6K (phospho Thr421/Ser424) antibody [HL129]	Rec Rb mAb	Hu,Ms,Rat	WB, IHC-P
GTX636804	PARP antibody [HL1364]	Rec Rb mAb	Hu,Ms	WB, ICC/IF, IHC-P
GTX635975	PD-L1 antibody [HL1041]	Rec Rb mAb	Hu	WB, ICC/IF, IHC-P
GTX635362	RAS (G12D Mutant) antibody [HL10]	Rec Rb mAb	Hu,Ms	WB, ICC/IF, IHC-P
GTX637784	SUN1 antibody [HL1947]	Rec Rb mAb	Hu,Ms	WB, ICC/IF, IHC-P
GTX636980	Vimentin antibody [HL1506]	Rec Rb mAb	Hu,Ms,Rat	WB, ICC/IF, IHC-P



Recombinant

- KO/KD Validation
- Comparable Abs
- IP/MS Analysis
- Orthogonal Validation
- Protein Overexpression

Rabbit Antibody Production Workflow



Prodotti Gianni srl è distributore esclusivo dei prodotti Genetex in ITALIA.
Via Quintiliano, 30, Milano P.Iva 08860270969 Offerte ricerca.offerte@prodottigianni.com Assistenza tecnica ricerca.assistenza@prodottigianni.com Tel 02 5097 220 Web www.ricerca.it

